

Township Tree Management Plan and Agreement

**Central Goldfields Shire Council and Powercor
Australia**

20.05.2014
V. 1.1

Contents

1. Purpose
2. Background
3. Scope
4. Communication Strategy
5. Extent of Pruning
6. Standard of Pruning
7. Tree Removals by Powercor
8. Council Tree Planting Strategy

1. Purpose

The purpose of this Tree Management Plan is to inform Managers of Public Land situated in urban areas of pending tree clearing works where Powercor are responsible for the maintenance of the Powerline clearance space.

Powercor seeks to engage Public Land Managers who are responsible for management of tree assets, to identify areas or trees which warrant joint development of long term management plans. The plan will enable Public Land Managers to actively participate in the selection of the method of maintaining the Clearance Space.

2. Background

Powercor/Vemco met with Central Goldfields Shire Council representative on the 20.9.2013 regarding the Pruning/Removal of Council Trees or any nominated & agreed significant Trees owned by Council, in a Non Declared area or Private trees. This plan and agreement has been developed based on discussions at these meetings and subsequent field assessments between Vemco staff & Central Goldfields Shire Council staff.

3. Scope

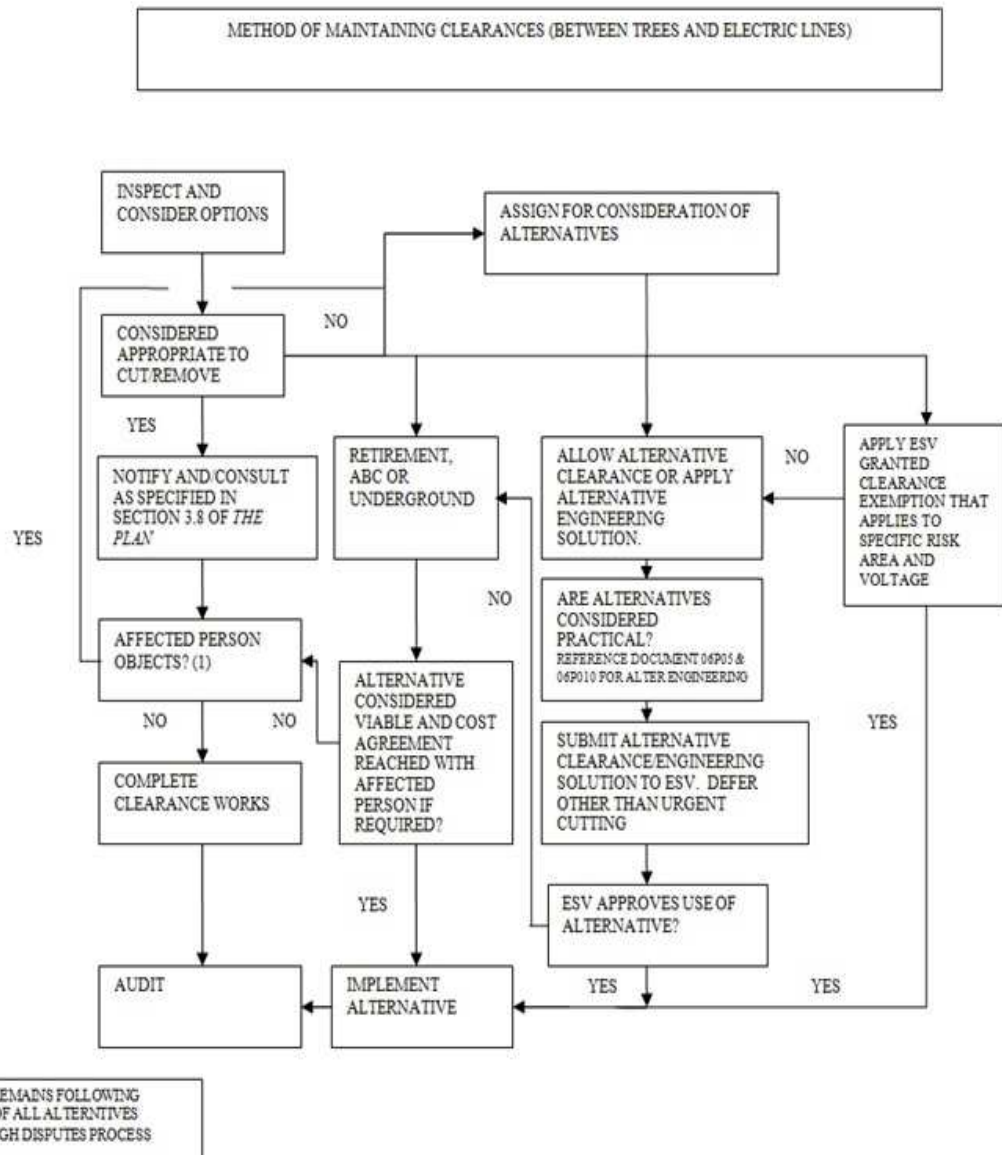
This plan is a documented agreement between Powercor and the Central Goldfields Shire Council that outlines the responsibilities, agreed actions and future tree/powerline management for the significant trees, Private trees and other Council Trees within town boundaries of the Central Goldfields Shire Municipality. The Towns within the Municipality included in this plan are tabled below.

	Significant Trees Supplied	Council Trees Inspected	Private Trees Inspected
Non Declared Towns			
Bealiba	No	No	No
Carisbrook	No	In Progress	In Progress
Dunolly	No	No	No
Talbot	No	In Progress	In Progress

Method of Maintaining Clearances

Alternatives to clearing may be raised for consideration. This may include, where appropriate vegetation covered by tree management plans. This vegetation will be treated as disputed work and managed as necessary under clause 6.2c of the Electrical Safety (Electrical Line Clearance Regulations) 2010.

The following flow chart outlines the process for maintaining clearances and managing alternative methods to obtain clearances that will maintain regulatory compliance.



4. Communication Strategy

To ensure the Council member and community are aware of the proposed works the following communication will be outworked:

- An advertorial regarding tree clearing will be placed in agreed local publication annually at Powercor's expense and council will be given opportunity to have input
- Council & Vemco will formally meet 6 monthly to discuss pending Powercor Vegetation program,
 - Powercor will attend one meeting per year
- Program – Community & Vemco

The affected customers will be notified of all Private tree works at the time of inspection and prior to clearing.

Vemco agree to meet with members of the community as deemed necessary to address any potential community concerns. Council may request a community meeting if they believe it is necessary.

Planned Meetings

(None nominated by Council at present)

5. Extent of Pruning

The extent of pruning Significant trees will be as per the description and listed site by site within the attached Significant tree list or determined in accordance with the process described in clause 2, Method of Maintaining Clearances. The list attached contains trees deemed significant by the Council. It is recognised that this list is not definitive and Powercor may add trees deemed as significant by other parties such as the national trust etc.

Where alternative clearances per the process in clause 2 or attached plan are determined not to be viable, trees will be pruned to allow for regrowth. The following table contains a guide to the distances to be allowed for regrowth; all distances in the table must have clearance space distances per the Electricity Safety (Electric Line Clearance) Regulations 2010 added to the regrowth when assessing actual distance from conductor.

PLEASE NOTE:

All trees on the attached list will be re-inspected after 12 months of pruning; any trees that have grown back within the clearance profile will be trimmed to a greater clearance in order to keep the required clearance profile clear of vegetation at all times.

Regrowth Allowance*

Tree Species	Year 1 regrowth allowance	
	Under	Side
Large Eucalypt	2.5m	0.5m
Small Eucalypt	1.0m	0.5m
Ash Trees	1.0m +	1.0m
Jacaranda	1.0m	1.0m
Cedars	1.0m	1.0m
Peppercorns	0.7m	0.7m
Plane Tree	1.5m	0.5m

Clearance Space to be applied

The clearance around Insulated cables including ABC and Service wires may be cleared, however light contact may be allowed to remain. Post inspections, Vemco may apply modified clearances to specific spans where it is assessed to be inappropriate to clear to clearances within the Code. **Modified clearances** will be **200mm deducted** from each of the specified clearance values (see attached chart) for uninsulated LV and clearances for insulated cables will be as per the 2005 Code of Practice. Any other modified clearances may be considered and documented individually for Powercor's consideration.

Type of Powerline	Clearance Spaces			
	1	2	3	4
	Spans up to and including 30 metres	Spans exceeding 30 up to and including 45 metres	Spans exceeding 45 up to and including 70 metres	Spans exceeding 70 metres
Nominal voltage	In all directions			
Bare low voltage and additional safety measures	500 mm -200mm (300mm)	600 mm -200mm (400mm)	800 mm -200mm (600mm)	1500 mm -200mm (1300mm)

Table 10.2 Electricity Safety Regs 2005.

GUIDE:

Urban LBRA allowance for sag above exemption clearance.

Maximum sag @ 50% of Span = 500mm allowance on top of exemption clearance.

Therefore, outside near pole you would allow 100mm for each 10% of span up to midspan.

- 20% of span = 200mm
- 30% of span = 300mm
- 40% of span = 400mm
- 50% of span = 500mm.

1) Sag and Sway

- a. For foliage below conductors 500mm sag allowance is to be made mid span
- b. For foliage beside the line 30mm per meter is to be allowed for swaying of the conductors. Sway calculation commences at the pole.

If in the opinion of the inspector Sag and Sway allowances are excessive for site conditions refer to RVM for clarification

MINIMUM CLEARANCE SPACES SURROUNDING A POWERLINE – Urban LBRA areas Aerial Bundled Cable or Insulated cable - Low Voltage

1. Clearance space
 - a. Foliage less than 10mm in diameter in contact with conductor that will **not** abrade insulation is not required to be pruned.
 - b. Existing branches are not required to be removed annually, if the existing branches exceed 130 millimetres in diameter and are more than 300 millimetres from the aerial bundled cable or insulated cable.

All trees that are in hard contact or likely to abrade the conductor insulation are required to be pruned.

6. Standard of pruning

- All pruning will be conducted in accordance with past practice or best arboricultural methods practical. Structural branches will not be removed without specific consultation with the tree owner.

7. Tree Removals by Powercor

- Powercor may recommend the removal of Council trees to the Council where the minimum trimming is deemed inappropriate. In these cases Powercor will gain consent through the Council consultation and formal agreement of the work Instructions submitted by Powercor after inspection is completed.
- Private trees may be removed in accordance with the negotiations following consultation with owners.

8. Council Tree Planting Strategy

- Council agree they will only plant trees under/adjacent to powerlines that, at mature height, cannot encroach the clearance space applicable at the time of planting unless the tree planting is required to maintain an existing Avenue of honour.
- Council agree to discuss with Powercor any planned tree planting as part of the maintenance of an Avenue of honour.

PLAN EXECUTED

SIGNED for and on behalf of

POWERCOR AUSTRALIA LTD

by

.....
Signature

.....
Name (printed)

Date:

SIGNED for and on behalf of
Council by

.....
Signature

.....
Name (printed)

Date: